



Application: 2005–2013 Corvettes, Base Models & Z06s



Search: *Lighting, Exterior & Interior*
www.mamotorworks.com

C6 RGB Side Cove LED Lighting Kit



Tools Needed



Installation can be done by raising the car and turning the wheels out on the side you are working on. We recommend testing the kit before you install it by hooking it up to the battery or any 12 volt source.

TIPS FOR USING THE ADHESION PROMOTOR: Cut the very top off the packet. As you pull the sponge out, squeeze excess fluid back into the packet and fold the top over so it doesn't dry out before you do both sides.

Step 1. Place the remote control box by the battery and stretch the long LED wire across the cowl. Pull the cowl weather strip off by pulling forward on it.



Step 2. There are 2 styles of inner fender shields depending on the year and model of C6. This shows the early style. Remove plastic retainers so you can pull the shield back to gain access to cove area.



Mamotorworks



@CorvettePassion



MidAmericaMotorworks



CorvettePassion

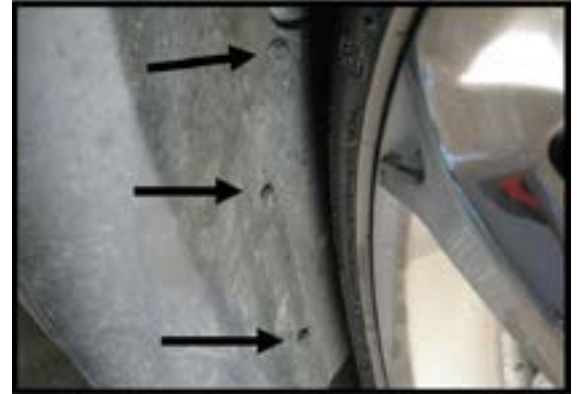
2900 North Third Street, Effingham, IL 62401
800.500.1500 • Worldwide: 217.540.4200 • FAX: 217.540.4800
www.mamotorworks.com • generalmail@mamotorworks.com

©Mid America Motorworks, Inc. All rights reserved.



Description (cont.)

Step 3. On GS and other later model C6's this is the style of inner fender panel. Remove 3 plastic retainers by pulling the center pin then remove the entire retainer. There is also a 8mm bolt on the bottom you can remove. Your not done yet, there are 5 clips that hold the panel to the outer lip of the fender.



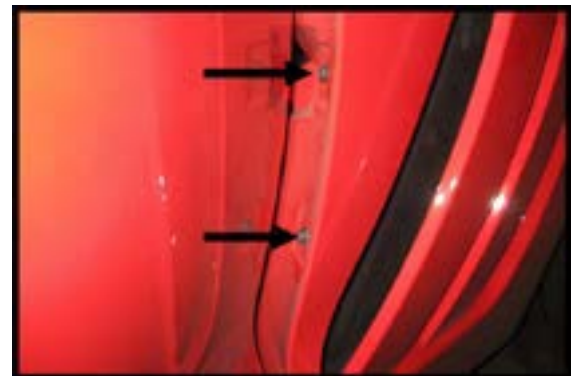
Step 4. Using a panel removal tool and a shop rag to protect paint, pry between the panel and fender to unlatch these clips. The one at the top of the fender has a hooked retainer so remove the 2nd and 3rd ones first.



Step 5. Shield removed to gain access to cove area. Leds will drop into this area for installation.



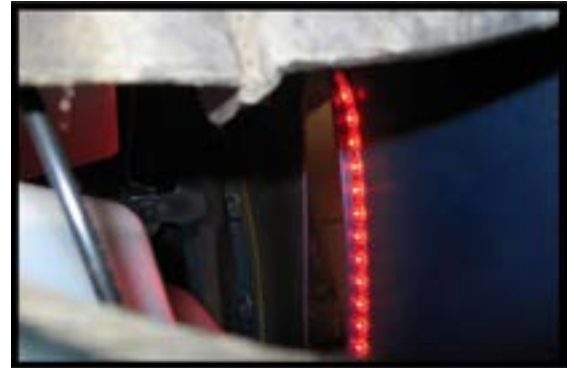
Step 6. If removing the cove shields you need to remove these 2 screws from the rear of the fender. Open door, put protective tape around this area to protect the paint. The shield is also held on by 2 adhesive.





Description (cont.)

Step 7. It helps to put a light in the cove area so you can find a path from above to route the led strips. The drivers side is easy. Just drop the leds past the WS washer bottle into the cove area. Wipe the area around the opening with alcohol swabs. Apply adhesion promotor. Best results are achieved by mounting the strips on the inside of the fender about an inch from the opening facing the cove shield.



Step 8. On the passenger side, Use a coat hanger to find a path down to the cove area (red arrow). Route leds down to the cove opening and use the same procedure to mount them as the drivers side. Mount on the inside of the fender facing the cove shield (white arrow). IMPORTANT; Use some very strong tape such as duct taper or gorilla tape to secure the wired end of the strip to the inner fender.



Step 9. Open the cover over the positive battery connection at the under hood fuse box. Place red wire from control box over this stud and secure with provided nut. You can also connect it to the battery.



Step 10. Below the battery tray (white arrow) along the frame rail there is a ground nut (red arrow). Place the black wire from the control box over this stud and attach with the provided nut.





Description (cont.)

Step 11. After leds are working you will need to hide the wires under the cowl weatherstrip or behind the engine away from the exhaust. You can tape the wires to the top of the cowl and slide the weatherstrip over being careful not to damage the wires.



Step 12. After all wires are secured and lights are working, You can now mount the control box.

You can now re-assemble all shields. Remember, the Inner fender panels have a hooked clip on the top that should go in first. Enjoy the new lights!!

