



Application: 2005-2013



Search: *Lighting, Exterior & Interior*
www.mamotorworks.com

C6 Footwell/Door Handle/Puddle Lighting Kit



Tools Needed

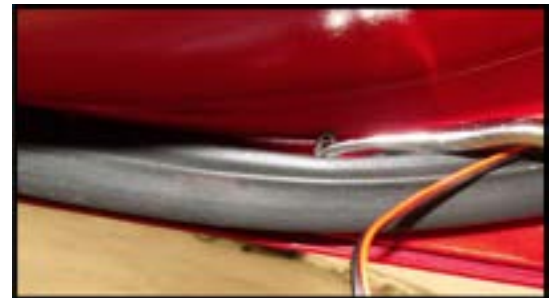


NOTES ABOUT KIT: Using this procedure you do not need to remove the door panels.

Step 1. First decide where you want to mount the led strip, clean with alcohol pad. Apply adhesion promoter. Peel and stick the led strip. Route the wire over to and behind the outer weather strip.



Step 2. Using a forked tool you can pry the weather strip retainers out to tuck the wire behind. Route the wire forward toward the rectangular rubber plug located near the front of the door.



Step 3. Remove the rubber plug.



Mamotorworks



@CorvettePassion



MidAmericaMotorworks



CorvettePassion

2900 North Third Street, Effingham, IL 62401
800.500.1500 • Worldwide: 217.540.4200 • FAX: 217.540.4800
www.mamotorworks.com • generalmail@mamotorworks.com
©Mid America Motorworks, Inc. All rights reserved.



Description (cont.)

Step 4. Straighten a wire hangar, feed it behind the bracket and toward the boot at the front of the door. Perform the next step before attempting to feed the wire forward.



Step 5. Open the door and find this rubber plug between the front of the door and the car. Pull the plug loose from the door side so you can put your hand in there to feel for the hangar you are feeding from the bottom (red arrow). Once you have routed the wire hangar through the front of the door, tape the led wires to the wire hangar at the bottom of the door and pull it through the front of the door.



Step 6. Next you will need to remove the panel above your feet on the passenger side. You can remove the factory light housing to make it easier to wire. You don't need to remove this panel on the drivers side because you can get to the next panel without removing it.



Step 7. This shows the drivers side kick panel on the left side of the foot well. (red arrow). You will need to pull out the panel with the wire harness coming out (blue arrow) Just grab the wire harness and pull the panel out. It pops out easily. Do this on both sides.





Description (cont.)

Step 8. Now route the led wires you pulled through the door into the door boot. Stick your hand through the hole where you removed the inside panel and feed the wires into the car. Pull the wires through to the foot well lights.



Step 9. Locate the factory foot well light wires. They will be orange and white on a C6 and orange and black on a C5. Place 1 wire in each of the metal V of the supplied connectors and snap shut



Step 10. Now plug in the led wires into the back of the connectors, C6, red to orange and black to white. On a C5, plug in the red led wire to the orange factory wire and the black to black. Be sure the interior lights have not timed out which they will do after about 15 minutes.



Step 11. After the leds are working you can re-install all the panels you had to remove. NOTE: There is an opening at the top of the inside upper panel for the LED wires to pass through without being pinched. Snap this panel in place.





Description (cont.)

Step 12. Now you can re-install the bottom rubber boot over the wires. It will self seal but you can dab a little silicone around the wires if you wish. Be sure all wires are secured using tape if necessary. That's it! Enjoy the new look!

