



**Application:** 1997-2004 Corvettes



Search: **C5 Interior LED Lighting Kits 1997-2004**  
[www.mamotorworks.com](http://www.mamotorworks.com)

**C5 HUD/DIC & Window Switch Interior LED Lighting Kit**

**Part Includes**

- HUD (Heads Up Display) LED Replacement Bulbs
- DIC (Driver Information Center) LED Replacement Bulbs
- Window Switch LED Replacement Bulbs (Does Both Doors)
- Rear Hatch/Trunk Button LED Lighting
- Active Handling Panel LED Lighting



**Tools Needed**



**NOTE:** Since instrument cluster removal is required we recommend installation be done by a qualified technician.

**CAUTION:** Once the cluster is removed, never lay it on its face for more than 10 minutes or damages to the gages can occur.

**Step 1.** Once the button modules have been removed, remove the factory bulbs by using a tight fitting flat blade screwdriver to turn them 1/8 turn counter clockwise and pull them out.

Next, refer to the pictures below to correctly install the LEDs. These instructions are to help you position the LEDs in the correct orientation. LEDs are polarity sensitive so they must be installed in the correct position to work. **The positive side of the LED is marked with a red dot on the back to aid you in installing it properly.** If the LEDs are very tight in the holes it may be necessary to use a small round file or dremel to slightly enlarge the hole.

You can test the entire cluster before final assembly by extending the cable and plugging in the unit and testing. If an LED doesn't light, try removing it, turning it 180 and re-installing it. Reverse instructions to re-assemble.



Mamotorworks



@CorvettePassion



MidAmericaMotorworks



CorvettePassion

**2900 North Third Street, Effingham, IL 62401**  
**800.500.1500 • Worldwide: 217.540.4200 • FAX: 217.540.4800**  
**[www.mamotorworks.com](http://www.mamotorworks.com) • [generalmail@mamotorworks.com](mailto:generalmail@mamotorworks.com)**  
 ©Mid America Motorworks, Inc. All rights reserved.



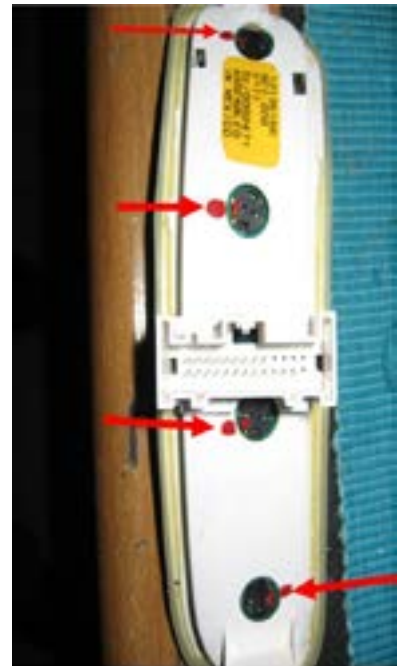
## Description (cont.)

### C5 Window Switch LED

**Step 1.** Remove drivers side window switch panel by prying up on the BOTTOM of the panel as shown. Remove the passenger side by prying up on the TOP OF THE PANEL. You will see 4 small sockets on the drivers side and 2 on the passenger side. Simply turn them 1/8 turn counter clockwise and remove all 6 factory bulbs. Refer to the diagram below for installing the LEDs.

**Note:** A pair of hemostats with toothed jaws works well for removing the sockets if you need to turn them.

**Step 2.** This shows the passenger side leds after they have been turned 1/8 turn into position. Top led in the 6 o'clock position and the bottom one in the 9 o'clock position. Plug the switch in and test the LEDs. Hook the bottom of the switch into the door panel and snap switch back into place.



**Step 3.** This picture shows the LED position after they are turned 1/8 turn into position. The top 3 LEDs will have the red dot facing left in the 9 o'clock position and the bottom one is on the right in the 3 o'clock position. Using your thumb, press the LEDs into place firmly. Using a flat bladed screwdriver that fits the slot well, twist clockwise 1/8 of a turn until it locks into place. Plug in the switch panel and test to make sure LEDs light. If they don't, remove it and turn the LED 180 degrees and re-test.

After all LEDs are working replace panel and snap back into place.





## Description (cont.)

### Fog/Trunk Button LEDs

**Step 1.** Locate the slot in the bottom of the hatch/fog housing. Using a small screwdriver pry the housing from the dash.



**Step 2.** Depress the release tab and disconnect the wiring harness.



**Step 3.** Red arrow shows the location of the bulb that needs to be changed. With a flat screwdriver, turn the bulb socket 1/4 turn counter clockwise and remove the bulb.



**Step 4.** Insert the LED by lining up the hooks on the LEDs with the slots on the back of the switch. Twist 1/4 turn clockwise to lock them in. You can use a tight fitting screwdriver or a pair of hemostats and twist them in. Turn on the lights to test. If they don't light, remove them and re-install them 180 degrees and re-test. If the circuit board in the switch pushes in while you are installing the LED, turn it upside down and smack it into your hand to get it back in position. Reconnect the plug and install the switch.





## Description (cont.)

### Active Handling Panel LEDs

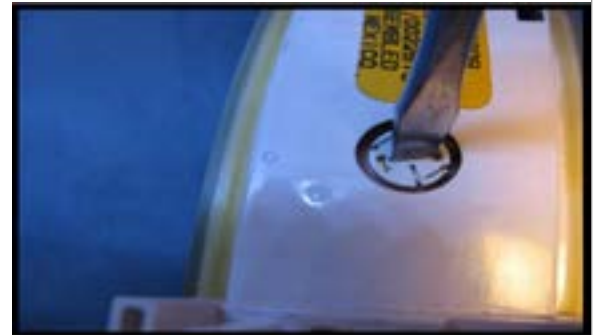
**Step 1.** Open the center console. Using a small pry tool, pry the A/H Panel up and out of the console. Disconnect the wiring harness.



**Step 2.** Red arrows show the location of the 2 bulbs. Using a good fitting flat screwdriver, turn the bulb counterclockwise 1/8 turn and remove.



**Step 3.** Using your thumb, press the LEDs into place firmly. Using a flat bladed screwdriver that fits the slot well, twist clockwise 1/8 of a turn until it locks into place. Using the same procedure as on the hatch switch, install the LEDs and twist them into place. Turn on the lights and plug the panel in to test. If they don't light, remove the LED, turn it 180 degrees re-install.



**Step 4.** Please note that some text on these panels is actually printed on so may not light up. This differs from year to year.

