



Application: 1988-1996 C4 Corvette

Part Includes

- 1 - Bronze Motor Gear
- 3 - Bushings

Headlight Motor Gear & Bushing Kit



Tools Needed



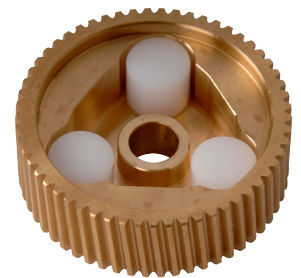
Search: **Lighting, Headlights**
www.mamotorworks.com

NOTE: To remove headlamp motor from vehicle, you will need to follow corresponding service manual instructions or take vehicle to a knowledgeable service technician.

NOTE: After headlight removal, it is helpful to lay out a shop towel on your workspace, then arrange each part in order of removal. This will greatly simplify reinstallation.

NOTE: To accommodate close tolerances, slight sanding of bushings may be required in some installations.

NOTE: On some model years, the motor shaft cover plate will have a hole in the center allowing the motor shaft to protrude through the cover during normal operation. This will be considered **"TYPE 1"** for these instructions. Headlight motors with no hole in the round cover will be considered **"TYPE 2"** for these instructions (See Reverse).



REMOVAL OF OLD GEAR AND BUSHINGS

STEP 1.

Separate headlamp motor from base fixture, (attached by a nut or a pin) being careful not to damage motor shaft.

STEP 2.

Using 1/4" wrench, remove the 3 mounting screws holding the round cover plate. Carefully pry the cover plate off with a small screwdriver or knife – **DO NOT DAMAGE THE GASKET**, as it will be reused. Record the number of flat, metal shims on the motor's shaft, to be sure you reinstall the same amount.

STEP 3 FOR TYPE 1 MOTORS.

After removing the round cover plate, remove motor drive end by first removing the plastic cap end with a small screwdriver by carefully prying at the base end, gently. Next, remove the (2) 1/4" screws on the cover holding the motor drive gear in place. Then with the plastic gear in place, hold the gear while removing the drive gear cover, making sure the gear does not move. With the worm gear housing removed, there should be a few shims and a bearing; if not, the worm gear housing is probably stuck to the magnets.

NOTE: When reinstalling, you will install a shim, the bearing, and then the last shim on shaft. Noting brushes on shaft, release your hold on the plastic gear and pull worm gear out of housing. The brushes will pop out along with springs, allowing removal of gear and shaft.

STEP 3 FOR TYPE 2 MOTORS.

After removing the round plate/cover, the gear and shaft can be pulled out easily by pushing on the shaft. Again, count the number of shims on the shaft end when assembly is completely removed.



Mamotorworks



@CorvettePassion



MidAmericaMotorworks



CorvettePassion

2900 North Third Street, Effingham, IL 62401

800.500.1500 • Worldwide: 217.540.4200 • FAX: 217.540.4800

www.mamotorworks.com • generalmail@mamotorworks.com

©Mid America Motorworks, Inc. All rights reserved.



Description (cont.)

REASSEMBLY INSTRUCTIONS

STEP 4.

GEAR AND SHAFT PREP: Clean all plastic dust/fibrous material out from gear and shaft housing. Generously grease gear, shaft, new bushings, and their housing.

STEP 5.

Place shaft bushings into motor gear. With new bushings in place, insert shaft into the motor gear until new bushings "seat" into place. Finally, apply FIRM pressure and tap the shaft until it seats fully into the gear.

STEP 6.

Reassemble headlamp motor by reversing disassembly procedure, while using grease to hold bearings and shims in place during reinstallation.

STEP 7.

Reinstall headlamp motor into vehicle.