



Application: 1985-1991 Corvette

Part Includes

- 1 - Pair of LT1 Style Tips
- 1 - Bolt Kit
- 1 - Shimkit

LT1 Style Exhaust Tips



Tools Needed



Search: *Pedals, Accelerator*
www.mamotorworks.com

STEP 1.

Before installing tips, first clean stock exhaust pipe ends with sandpaper to remove dirt, road oil, etc. Clean about 2-3" back on the tips to clear for installation.

STEP 2.

Measure distance from left to right outside ends of stock tips to determine if you need to use the shims provided. (See sketch #1) Due to production variances, you may or may not need to use shims to fill in on outsides of stock tips. (See sketches #2 and #3)

STEP 3.

Make sure shims are tight on both top and bottoms of extensions and especially on outer side so extension doesn't work loose during use.

STEP 4.

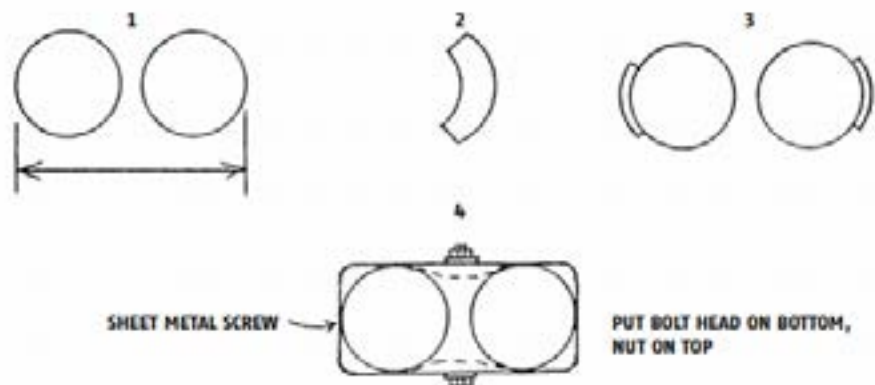
Slide extension over stock pipes (along with shims if used). Position the extension as far back as you desire for the right appearance in relation to your rear bumper. Make sure it is far enough so fastening bolt is ahead of the angle cut of the stock pipe.

STEP 5.

Install the 1/4" bolt, washer and lock nut. Tighten down, but not so tight that it greatly distorts the back side of the extension. The bend in back will not show on the front side. (See sketch #4)

STEP 6.

Keep stainless steel finish looking good by occasional cleaning and light waxing. If you desire, interior of the extension can be painted with flat black paint to darken the inside.



- Mamotorworks
- @CorvettePassion
- MidAmericaMotorworks
- CorvettePassion

2900 North Third Street, Effingham, IL 62401
 800.500.1500 • Worldwide: 217.540.4200 • FAX: 217.540.4800
www.mamotorworks.com • generalmail@mamotorworks.com
 ©Mid America Motorworks, Inc. All rights reserved.