

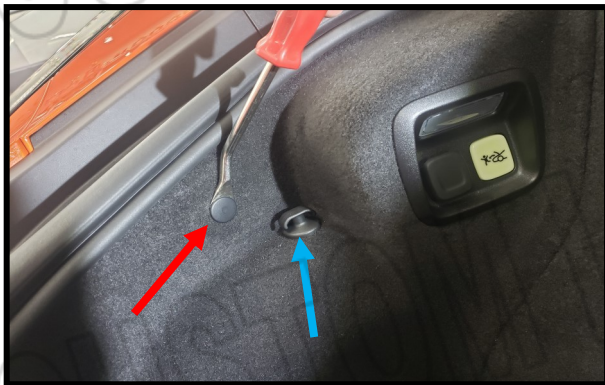
# C8 FRONT TRUNK LEDS



You will need a panel removal tool similar to this one. They are available at any auto parts store.



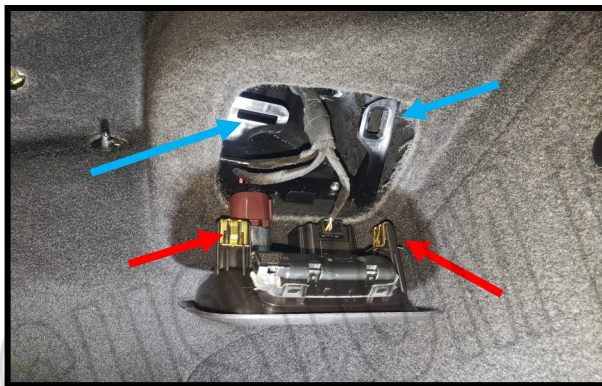
Pull up on the weather strip that surrounds the trunk. You will need access across the front and Passenger side as shown.



Remove the trunk net. Using the panel tool remove the flat retainer (red arrow). Unscrew the net retainer. (blue arrow).



Pry out the light housing starting at this corner. The bracket that the light attaches to is very flexible so we found it is best to also push the housing out from behind at the same time. See next picture.

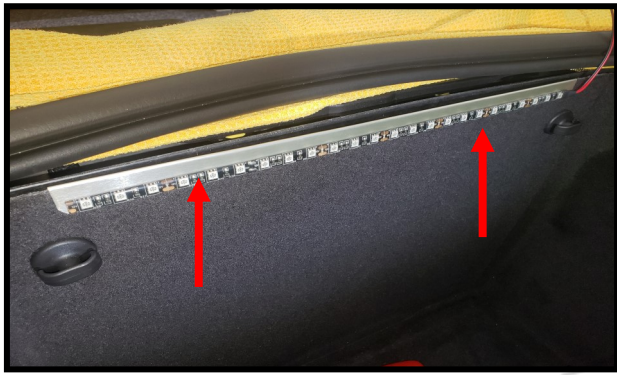


Red arrows show the clips you need to push out of the bracket from behind. (blue arrows).

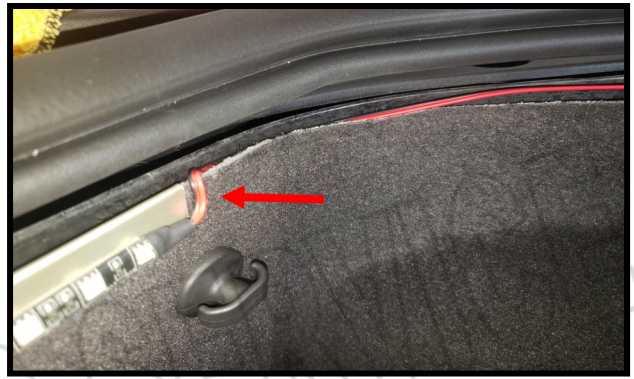


Pull back the trunk liner and push out the retainer clips and remove the light housing.





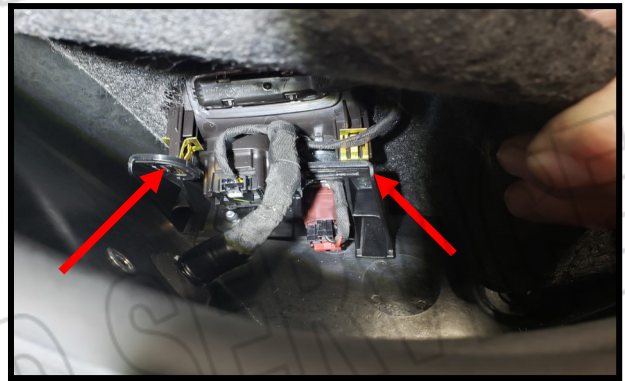
Slide the led bracket over the trunk liner. Center it over the 2 net retainer nuts as shown.



Sh  
ap



Depress the small tang on the factory light connector and disconnect the light. Plug in the led wire . The led strip should now light up. Keep in mind the lights will time our after 15 minutes so you may have to close and open the trunk to re-activate the lights.



Re-install the light housing by lining up the clips with the bracket openings. Support the bracket from behind while pushing the light housing back in place.



You can now re-install the weather strip. The u-channel on the weather strip goes over the rigid outer liner and the lip under my thumb will cover the inner liner.



Pull the lip of the weather strip over the exposed portion of the led bar hiding the wire the best you can. Do this around the entire weather strip that you remove. That's it! Enjoy the new lights.



# C8 REAR TRUNK LEDS

The factory lights will be disabled when this kit is installed. You wont miss them!



Lift up on the weather strip across the entire back of the trunk.



Remove the trunk net retainer on each side of the trunk to gain access to the factory lights.



Depress the tab to unplug both lights. They will be non-functional.



With the led strip with the connector end on the passenger side, slip the channel over the trunk liner aligning the slot on the back of the channel directly above the trunk net retainer. The channel is flexible so you can shape it to match the slight bend in the trunk .



Mount both strips as shown, bend the wires in a U shape and tuck the wire behind the liner.



Install the weather strip u channel over the trunk outer liner while pulling the front lip of the weatherstrip out to cover the led channel bracket and inner liner.

Plug in the led connector to the factory harness. The lights will time out after 15 minutes so you may need to close and then re-open the trunk to activate the lights. Now re-install the weatherstrip.



Push down firmly on the weather strip and run your finger under the front lip to cover the wires and brackets.



# C8 FOOTWELL LEDS

## HELPFUL TOOLS

Panel removal tool as in first picture

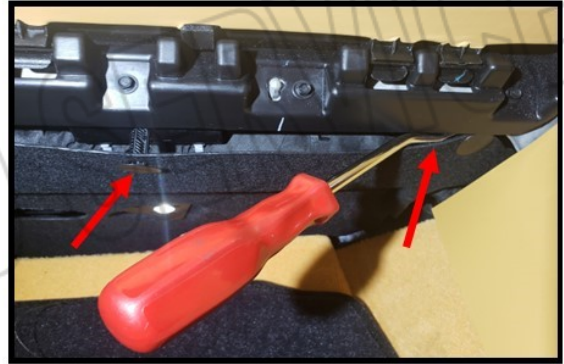
7mm nut driver or socket

flat blade screw driver

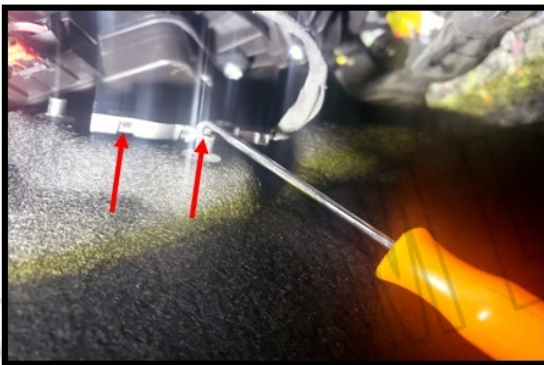
small pic



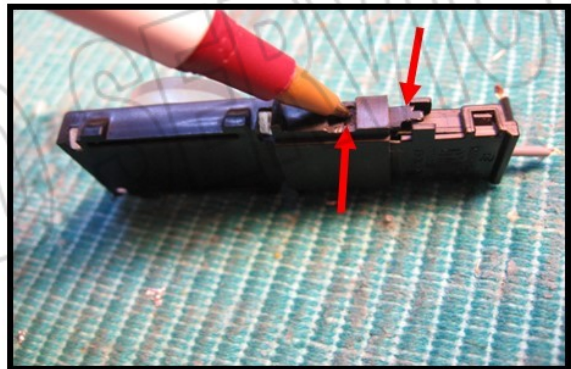
This tool is helpful as the panel pins on the passenger side are very difficult to remove. Available at most parts



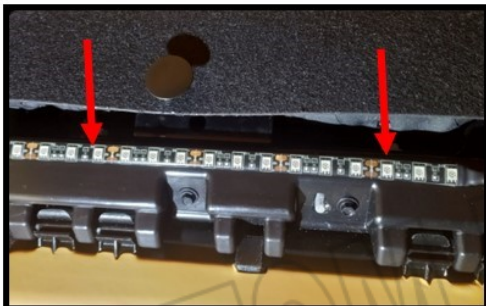
**Passenger side:** Remove the 2 pins holding the under dash panel in place. They can be difficult.



Release the factory light at the 2 points and pry the housing out.



Release the connector from the housing by depressing this tab at either arrow then disconnect the light. You can put the light back in the housing but it won't be used.



Plug in the led strip. This shows where to mount the strip on the flat area just behind the panel. Wipe the area with the alcohol pad. Pull the adhesive backing off the strip. **Cut the very top off the adhesion promoter. Squeeze the excess fluid back into the packet as you pull it out. Be careful not to spill it. Wipe a thin coat on the area where the strip mounts then place the sponge back into the packet. Fold over the top and clamp it shut so it doesn't dry out. You will need some for the other side and you can also use any excess on other kits you may have purchased.**

The interior light circuit will "time out" after about 15 Minutes so if the leds don't light, close and open the door. You can now hide the wires above the panel and push the pins in to retain the panel in place. Now on to the drivers side.

# DRIVERS SIDE



Remove 2 x 7mm screws and pull panel down. The led strip will mount on these 2 ribs (blue arrows)



Force the light clockwise so it unlatches from the panel. Unplug the connector using the same method as the other side. You can put the factory light back in place or store it. Plug in the led strip. Keep in mind the lights may time out.



Prep the area along the 2 ribs with alcohol wipe and adhesion promotor. We like to slide the side toward the console under this tie strap and secure the rest of the strip along the ribs. Don't take the adhesive backing off the area that gets tucked under the tie strap or it will be difficult to slide the strip in place. Pull the adhesive backing off the rest of the strip and press it in place a couple times.

Once everything is in place and working you can hide the wires above the panel and replace the 2 screws.

That's it! Enjoy the new lights.