

Suggested Installation Instructions for:

677-511 & 677-512

1985-1991 C4 L98 MAT Sensor Relocating Kit

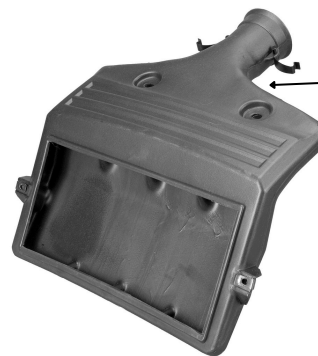
Count on Mid America Motorworks for all your Corvette Parts and Corvette Accessories

Please take the time to read and understand these installation instructions.

Kit Includes:

- 1 Sensor
- 1 Wiring Harness Extension
- 1 Rubber Grommet
- 4 Wire Ties

1. For safety, disconnect the battery or remove keys from ignition.
2. Disconnect the wiring harness from the original MAT Sensor. Location of the MAT sensor is on the LH side under the air plenum. Leave the old sensor in place.
3. Plug the included extension harness into the existing wiring harness. Run the new harness on the LH side of the fenderwell to the front of the car. Secure harness with supplied wire ties.
4. Drill a 7/8" hole into the air filter housing as shown in the image below. (NOTE: A wood worker's spade bit works well.)
5. Install the sensor into the grommet. Carefully start one side of the grommet into the hole you drilled in the air filter housing. Using a flathead screwdriver, carefully work the grommet lip into the hole until completely seated. Rotate the sensor in the grommet to insure the ground/sensor assembly is fully seated.
6. Connect harness to sensor and reconnect battery.



Drill 7/8" hole in this general area.

QUESTIONS? Contact us directly at 800.500.1500 or customer.service@mamotorworks.com!

