



Application: 2014-2019 Stingray

Part Includes

- 2- 1/2" x 1/4" - 20 bolts
- 1- Removeable/ Lockable Front Plate

Front License Plate Bracket

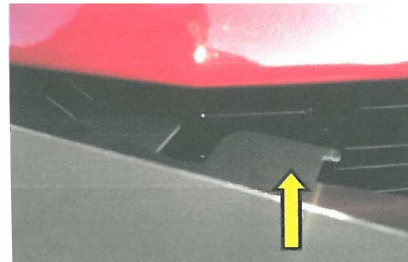


Tools Needed



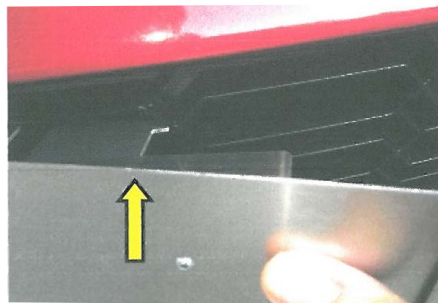
STEP 1.

Place the lower edge of plate bracket into lower grill opening (about a 45 degree angle).



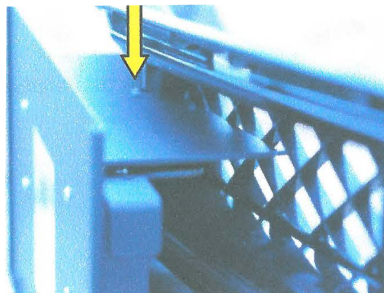
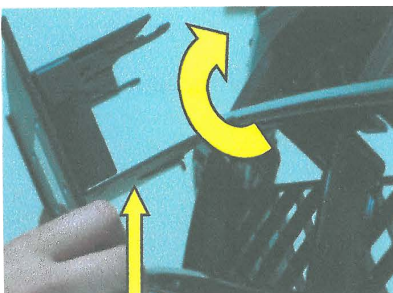
STEP 2.

Verify the lower tabs are INSIDE the grill



STEP 3.

Rotate top tabs into position while depressing side latches fully.



Mamotorworks



@CorvettePassion



MidAmericaMotorworks

2900 North Third Street, Effingham, IL 62401

800.500.1500 • Worldwide: 217.540.4200 • FAX: 217.540.4800

www.mamotorworks.com • generalmail@mamotorworks.com

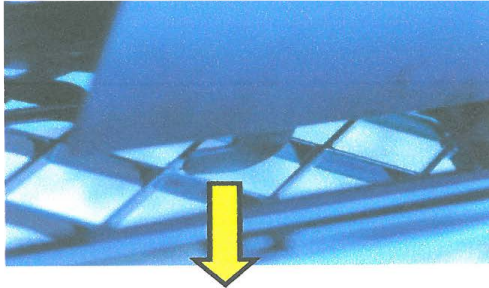
©Mid America Motorworks, Inc. All rights reserved.



Description (cont.)

STEP 4.

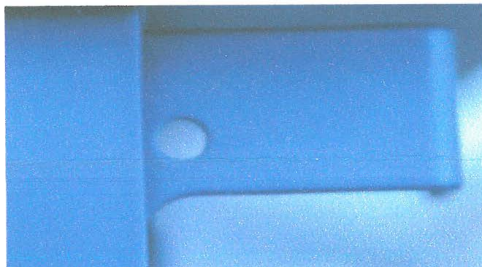
Verify position of latch, and make sure top and bottom rubber grommets are in place, then press tabs in until frame is on the grill. Release and pull out tabs.



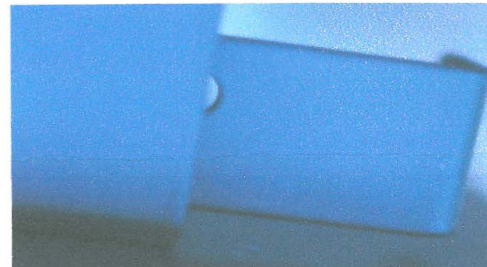
STEP 5.

Verify that holes can be seen from top to ensure proper placement. If not, recheck lower tabs and upper tabs for correct position and adjust.

CORRECT



INCORRECT



STEP 6.

Plate can be secured with bolts or padlock(s) if desired.

STEP 7.

Slip license plate into frame and secure with 1/2" bolts.