

## Installation for Chevrolet Corvette (C4) PN- 11376



**These instructions have been written to help you with the installation of your Borla Performance Exhaust System. Please read this document completely before beginning the installation of your system.**

**Please compare the parts in the box with the bill of materials provided to assure that you have all the parts necessary for this installation.**

**To ensure this part number fits your specific model year, please visit our website for the latest model year listings at [www.BORLA.com](http://www.BORLA.com).**

**Thank you for purchasing a Borla Performance Exhaust System.**

**Borla Performance Rear Section Exhaust System (11376) is designed for the Chevrolet Corvette (C4) Coup/Convertible RWD 5.7L V8 engine, automatic or manual transmissions.**

Borla Performance Industries recommends that an exhaust shop or professional after market parts installer perform the installation of this system. However, if you decide to perform the installation on your own it is recommended that two people are used. This installation should not be performed by one person due to the risk of injury. Ensure the installers use all under car safety precautions including eye protection.

*Please take time to read and understand the following...*

By installing your Borla Performance Exhaust System, you indicate that you have read this document and you agree with the terms stated below.

It is the responsibility of the purchaser to follow all installation instruction guidelines and safety procedures supplied with your Borla Performance Exhaust System

Borla Performance Industries assumes no responsibility for damages occurring from misuse, abuse, improper installation, improper operation, lack of responsible care, or all previously stated reasons resulting from incompatibility with other manufacturer's products and/or systems.

Included with your Borla Performance Exhaust System is a warranty card. Please read it carefully before you begin any work on your vehicle. If you should have any questions regarding our warranty policy, installation, or any other matter pertaining to your new Borla Performance Exhaust System, please give us a call at the number provided on the warranty card.

**Minimum Required Tool List:**

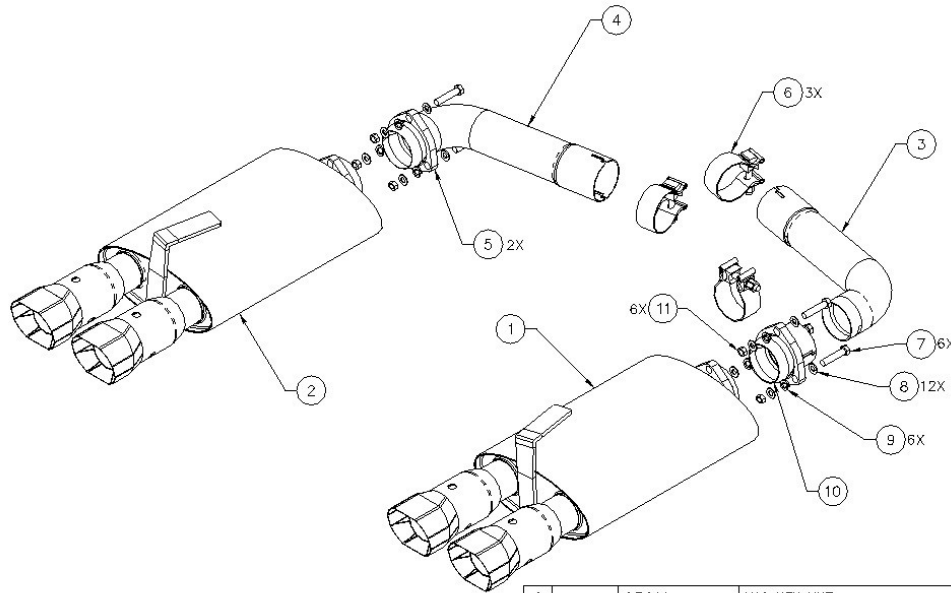
**TOOLS:**

1. 3/8" Drive Ratchet
2. 3/8" Drive Extension 3"
3. 15mm Socket
4. 17mm Wrench
5. 17mm Socket
6. Pry Bar

**SHOP SUPPLIES:**

- 1 Spray Lubricant

**Borla Performance - Bill of Materials**



6	93011	M10 HEX NUT		11
1	63952	BALL-JOINT SLIP FIT: $\phi$ 2.50 X 3.00		10
6	92018	M10 LOCK WASHER		9
12	92010	WASHER: FLAT, M10		8
6	91151	SCREW: M10 X 60MM X 1.50PITCH		7
3	90113	ACCUSEAL CLAMP: $\phi$ 2.50		6
2	46353	3-BOLT FLANGE		5
1	42921	L/H MUFFLER INLET PIPE: $\phi$ 2.50 X 16.00"		4
1	42920	R/H MUFFLER INLET PIPE: $\phi$ 2.50 X 15.25"		3
1	50223	L/H MUFFLER ASSEMBLY		2
1	50224	R/H MUFFLER ASSEMBLY		1