



Application: Bus 1950-1979, Ghia 1956-1974, Std. Beetle 1946-1977, Thing 1973-1974, Type 3 1962-1973

Part Includes

- 1 - Sending Unit
- 1 - Mounting Hardware

Fuel Tank Universal Sending Unit



Tools Needed



STEP 1.

Remove ring terminal

STEP 2.

Loosen two screws (d) and adjust the plastic housing up or down until the proper dimension from Table 1 is obtained, then retighten screw securely.

STEP 3.

Re-install ring terminal and hardware, then tighten all hardware securely, avoiding over tightening.

STEP 4.

To install the float assembly, loosen screw (h). Remove the short piece of rod and discard. Insert the float rod until the proper length (c) from Table 1 is met, then tighten the screw securely. Carefully cut off any excess rod with bolt cutter or similar tool, taking care not to damage the assembly.

STEP 5.

With the gasket in place below the flange, carefully feed the float arm and sender body into the 1.697" (43mm) hole in the tank. Make certain the float arm has free motion within the tank. Using the sender flange as a template, locate the position of the five mounting holes. Use the supplied screws to mount into a tank with threaded inserts in place.

STEP 6.

Insert fuel sender assembly into tank, align holes and thread in mounting screws. Check that all screws are secure to complete assembly.

AVOID OVER TIGHTENING!

Continue to Back of Page...

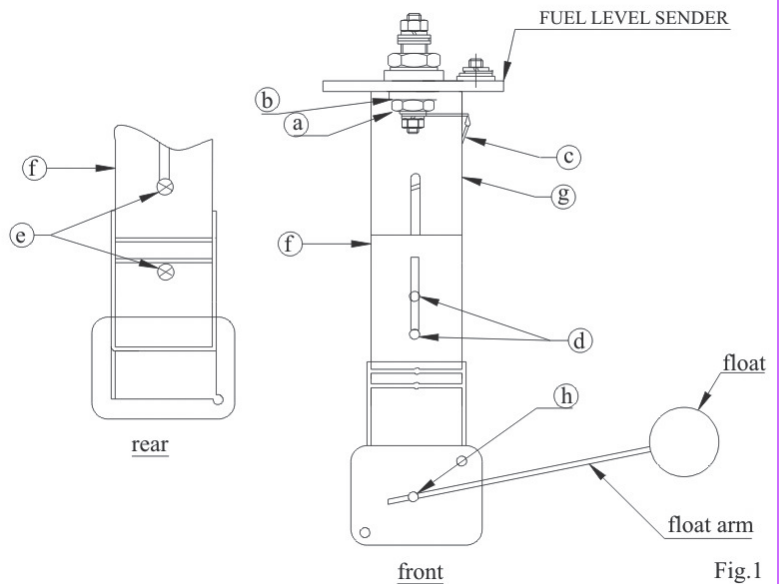


Fig. 1

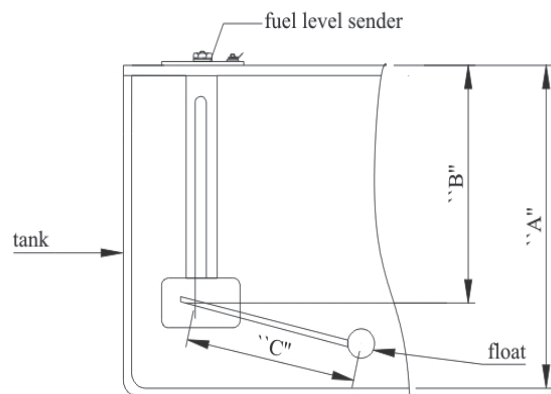


Fig. 2



2900 N. Third Street, P.O. Box 1368, Effingham, IL 62401
 800.500.1500 • Worldwide: 217.540.4200 • FAX: 217.540.4800
 www.mamotorworks.com • mail@mamotorworks.com

©Mid America Motorworks, Inc. All rights reserved.



TABLE 1(dimension in inches)

A	B	C	A	B	C	A	B	C
6.0	3.0	3.5	12.0	6.0	7.8	18.0	9.0	12.0
6.5	3.25	3.8	12.5	6.25	8.1	18.5	9.25	12.3
7.0	3.5	4.2	13.0	6.5	8.5	19.0	9.5	12.6
7.5	3.75	4.5	13.5	6.75	8.9	19.5	9.75	12.9
8.0	4.0	4.9	14.0	7.0	9.3	20.0	10.0	13.4
8.5	4.25	5.3	14.5	7.25	9.6	20.5	10.25	13.8
9.0	4.5	5.6	15.0	7.5	10.0	21.0	10.5	14.2
9.5	4.75	6.0	15.5	7.75	10.4			
10.0	5.0	6.4	16.0	8.0	10.7			
10.5	5.25	6.7	16.5	8.25	11.0			
11.0	5.5	7.1	17.0	8.5	11.4			
11.5	5.75	7.4	17.5	8.75	11.8			