



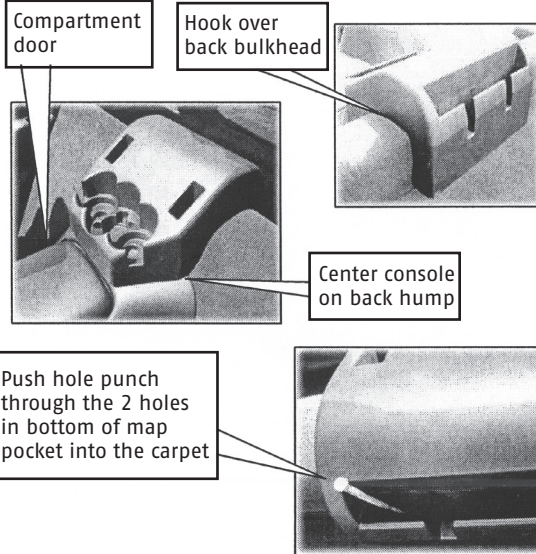
Suggested Installation Instructions for Product Number:
648-071, 1997-2004 Coupes, Fixed Roof Coupes & Z06
648-073, 2005-2011 Fits All C6s
Corvette Storage Console for Coupes, Fixed Roof Coupes & Z06

Read the entire instruction before proceeding. The Storage Console must be installed correctly before use.

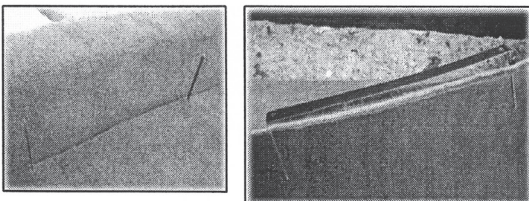
Parts Included with the Storage Console:

- Storage Console
- Fastening Panel
- Vibration Pad Set
- Hole Punch

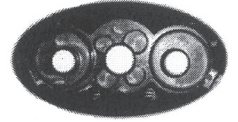
1. Test fit the Storage Console in car as shown. Position the Console making sure it is centered on the back hump and the compartment door will open. While holding the back of the Console down in position, push the Hole Punch through the holes in the bottom of the back map pocket into carpet below. The holes must be pressed through the carpet rubber backing.



2. Remove the console. Lift the back cargo area carpet and push the pointed tabs of the fastening panel through the punched holes as shown.



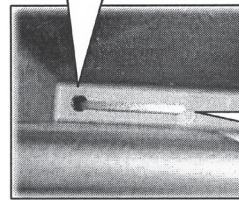
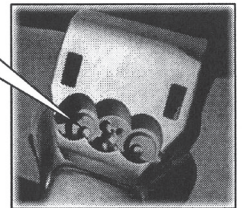
3. Remove the backing from the adhesive pads on the bottom of the Console. The adhesive pads will contact the car's back hump.



4. Carefully place the Console into position. Be sure the Console is centered on the back hump and the pointed tabs of the Fastening Panel come through the holes in the back map pocket of the Console. Press down firmly on the cup holder openings and hold for 30 seconds to set the adhesive pads. Press down on the backside of the Console and reach into the map pocket to bend down the Fastening Panel tabs. **The Console must be mounted securely before use.**

Holes in bottom of the map pocket align with pointed ends of Fastening Panel.

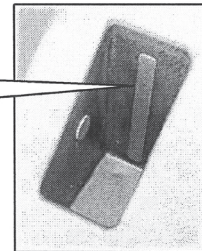
Press down firmly in bottom of three circles



Press down firmly on the back of Console and bend down ends of Fastening panel as shown.

5. Install padding strips from the Vibration Pad Set by removing backing and adhering into openings to prevent rattles as needed.

Install padding strips in openings as needed to provide items snug fit and to prevent rattles.



6. Use the console to store mugs, beverage containers, sunglasses, cell phones and even coins. Accessorize your Console with emblems and decals to further beautify your Corvette.

