



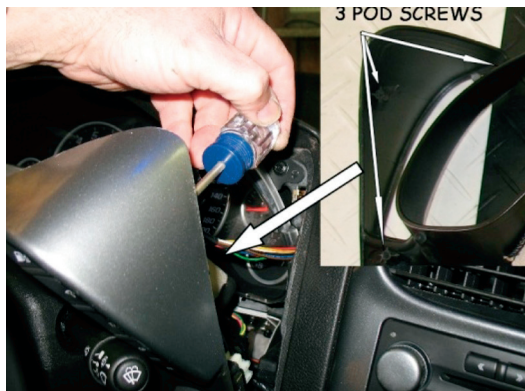
Suggested Installation Instructions for:
643-156, 643-157, 643-158, 643-159
C6 Corvette Gauge Bezels and C6 Gauge Backing Plate

Count on Mid America Motorworks for all your Corvette Parts and Corvette Accessories

1. Release the pod surround by prying with a putty knife or pry tool.



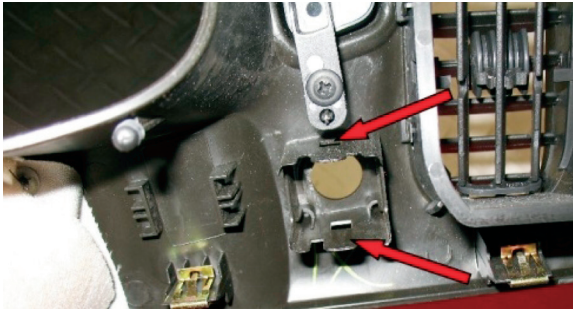
2. Next, remove the three screws holding in the pod. They are shown below.



3. Unplug the ignition switch. Shown with green arrows.



4. Remove the dimmer control. Release points shown below. Now the surround will come free.



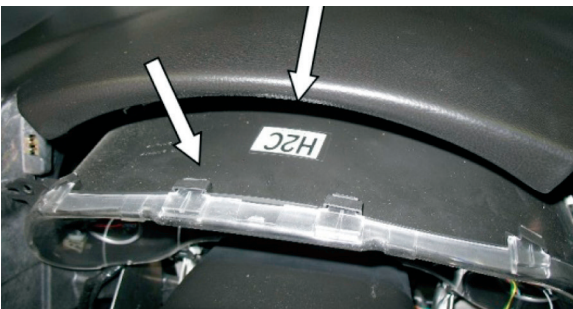
5. Make sure the pod mounting clips did not come out with the pod. If they did reinstall them on the surround.



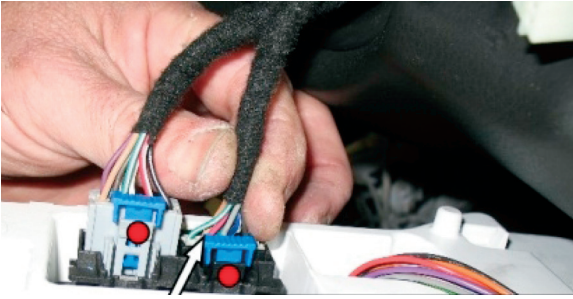
6. Remove the cluster from the pod. The four screws are shown below.



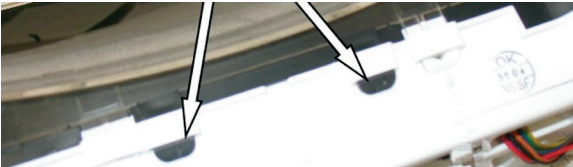
7. Remove the cluster unit from the console. Make sure to clear the console while you pull it out. You might need to lift the console a bit to remove.



8. Remove wires. To do this you'll need to release the blue locks 1st by lifting them up. Then press in the release tab (red dots) and pull out the connector.



9. Remove the clear lens. To do this you need to press in the white tabs. You might need a 2nd person to help you with this. Once the tab is released you can use a coin to keep the tab from connecting again.



10. Install your new backing plate or gauge bezels. Make sure to clean the area with alcohol, and allow to dry. Then press firmly into place for 2-3 minutes. Once the new piece is securely attached you can assemble the dash again.