



Suggested Installation Instructions for: 604-603, 604-604, 1984-1996 Power Window Regulator w/ Motor

DIRECTIONS FOR SAFE AND PROPER INSTALLATION

Note: 87 Conv. & 88-96 Application is direct replacement of existing component. (See steps C&D)

A. Removal of 84-86 & 87 Coupe Regulator:

- Step 1. Run window glass to mid position, then loosen the three glass mounting nut and washer assemblies. Note location of studs in regulator slots.
- Step 2. Separate glass from regulator and block glass with rubber-padded clamps above belt line. Remove the three glass mounting nut and washer assemblies, then lower glass.
- Step 3. Disconnect electrical connector of regulator.
- Step 4. Detach regulator from door by removing the two studs and nuts at top and three bolts at bottom. Remove regulator from door.

B. Retrofit Installation of 84-86 & 87 Coupe Regulator:

- Step 1. Lift window glass up out of way and retain with rubber padded clamps.
- Step 2. Drill two holes for 6mm bolts in bottom of door as shown in Fig. 1.
- Step 3. Replace center glass mounting stud with shorter stud or shorten original stud by 7mm. (see Fig. 2)
- Step 4. Install rubber downstop in slot in bottom of door. (See Fig. 1)
- Step 5. Install regulator as follows. (See Fig. 3)
 - a. With regulator lift arm at shifting position height (Approx. 140mm from bottom of lift arm to bottom of regulator), insert bottom of regulator into door. Then tilt lift arm up to get top mounting feet of regulator into door.
 - b. Line up all four mounting feet with holes in door, then loosely install the two bottom bolts first. Loosely install the two top bolts, then tighten the two top bolts.
 - c. On passenger side only, reverse the wire terminals in electrical connector.
 - d. Remove electrical tape from wiring harness as needed to allow connector to reach new regulator location.

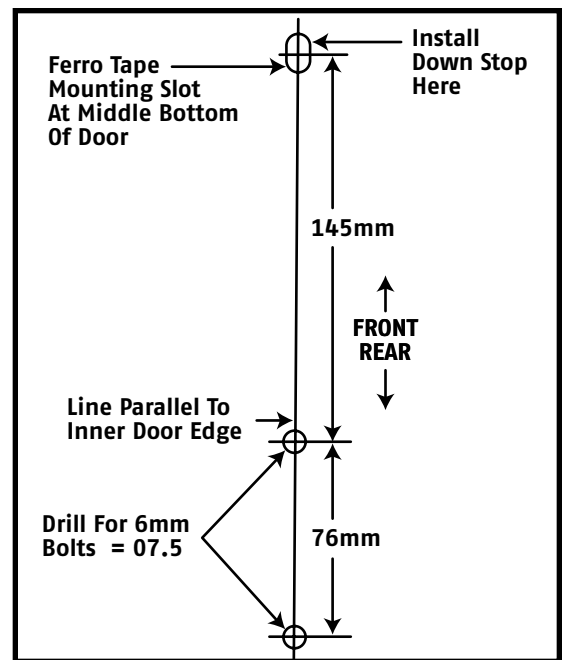


Fig. 1 - 1984-86, 87 Coupe Drilling Dimensions

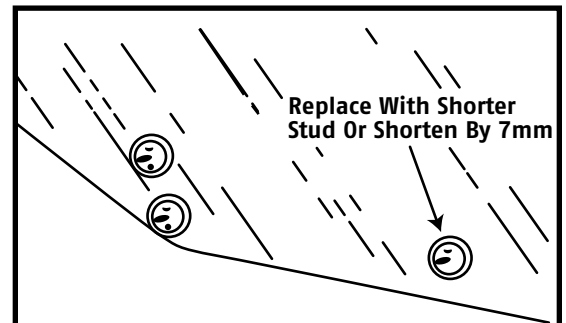
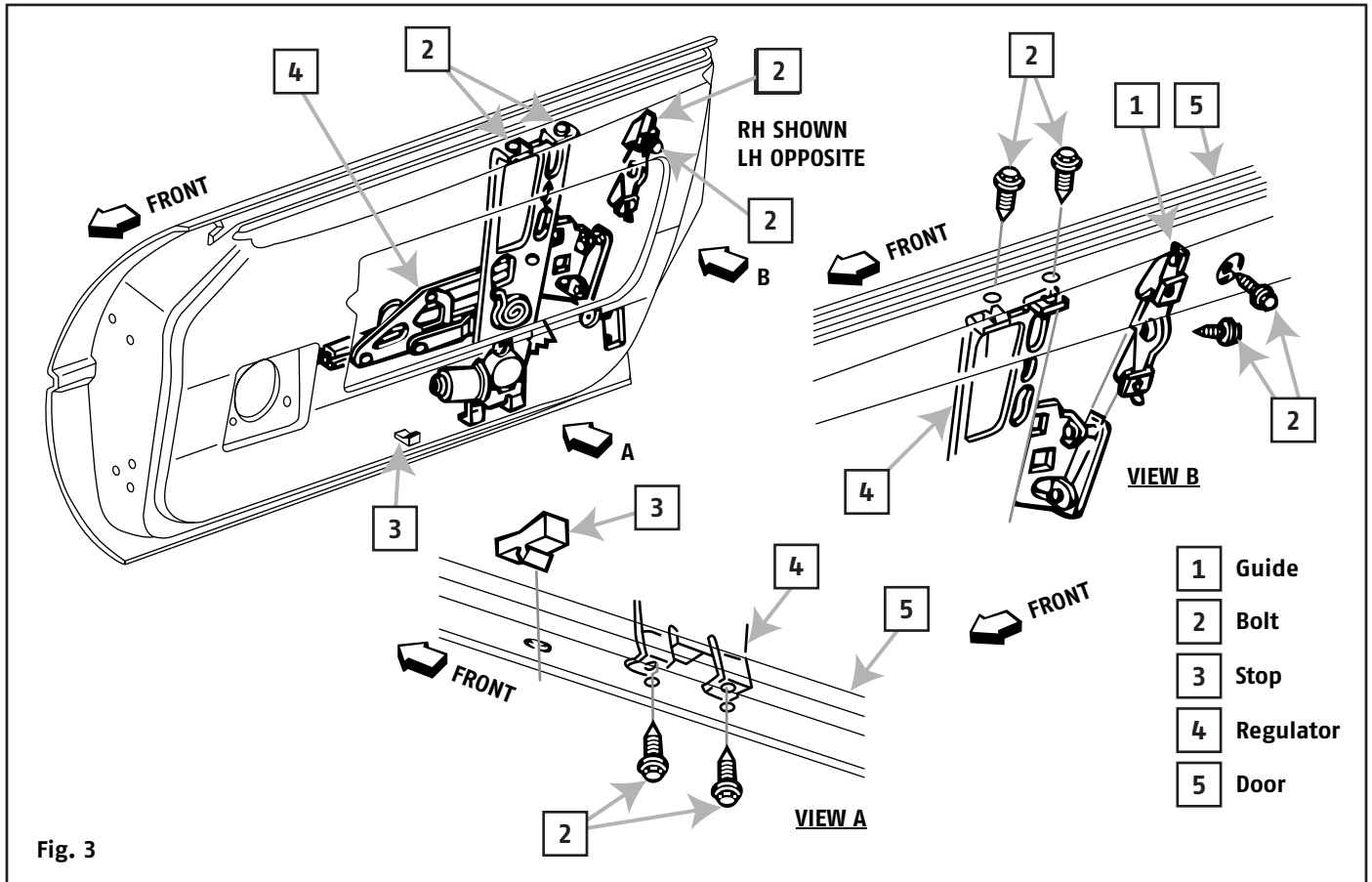


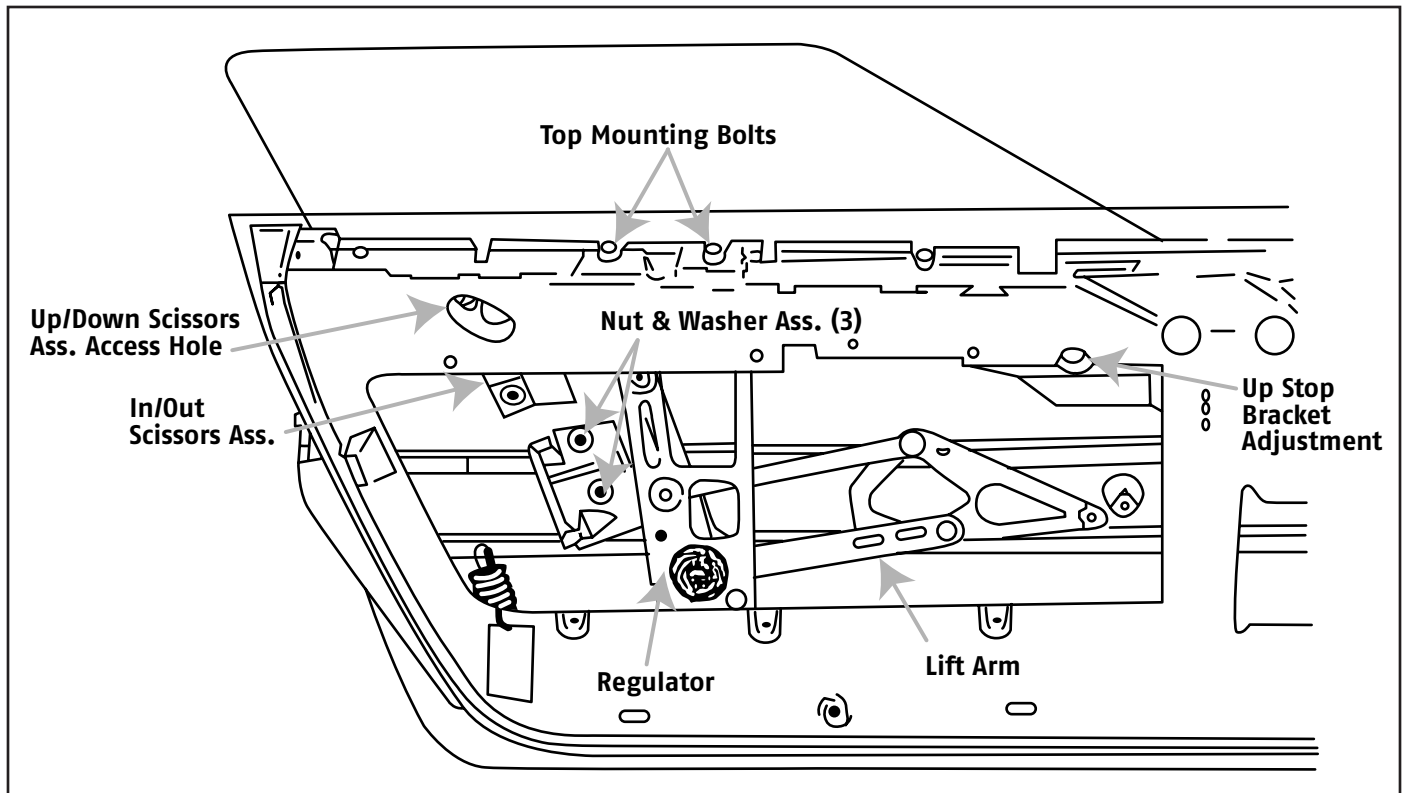
Fig. 2 - Center Glass Mounting Stud



- Step 6. Attach glass loosely to regulator with the three nut and washer assemblies. Position the glass studs in the regulator slots in approximately the same locations as noted in Section A Step 1.
- Step 7. With door closed and with a helper outside to push against window glass, raise and adjust window so that edges of glass are against and centered on window seals. Tighten the three glass mounting nut and washer assemblies.

Note: Do not alter the front up stop bracket adjustment unless the window glass is being replaced. Do not alter the rear scissors up/down or in/out adjustments unless glass adjustment can not be obtained otherwise.

- Step 8. When glass is properly adjusted, tighten the two top regulator mounting bolts.
- Step 9. Lower and raise window glass several times to check operation and adjustments.



C. Window Regulator Replacent of 87 Convertible, 88-96 ALL.

- Step 1. Remove armrest, accessory trim plate, and door trim panel.
- Step 2. Remove inner panel liner.
- Step 3. Disconnect the following linkages from the inner mounting plate:
 - Power door lock linkage (clip)
 - Latch handle linkage from guides on back of mounting plate and clip at latch handle.
 - Door lock rod from guide on back side of mounting plate and at pivot.
- Step 4. Remove bolts holding inner mounting plate.
- Step 5. Remove window guide.
- Step 6. Lower inner mounting plate into door and remove by titlting plate outward at the top.
- Step 7. Unclip wiring harness from inner mounting plate.
- Step 8. Remove glass stop.
- Step 9. Unbolt glass from regulator and remove.
- Step 10. Remove two upper and two lower regulator mounting bolts.
- Step 11. Disconnect power windows motor connector.
- Step 12. Remove regulator from door.

D. Installation Regulator Replacent of 87 Convertible, 88-96 ALL:

Reverse removal procedure, adjust glass as necessary.